

Vattenfall Wind Power Ltd

Thanet Extension Offshore Wind Farm

Appendix 25, Annex L to Deadline 1 Submission:
Pilot Transfer Track Plots

Relevant Examination Deadline: 1

Submitted by Vattenfall Wind Power Ltd

Date: January 2019

Revision A

| | |
|-------------------|---------------|
| Drafted By: | Marico Marine |
| Approved By: | Daniel Bates |
| Date of Approval: | January 2019 |
| Revision: | A |



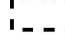

| | |
|------------|--|
| Revision A | Original Document submitted to the Examining Authority |
| N/A | |
| N/A | |
| N/A | |

Copyright © 2019 Vattenfall Wind Power Ltd
All pre-existing rights retained









THANET EXTENSION OFFSHORE WIND FARM

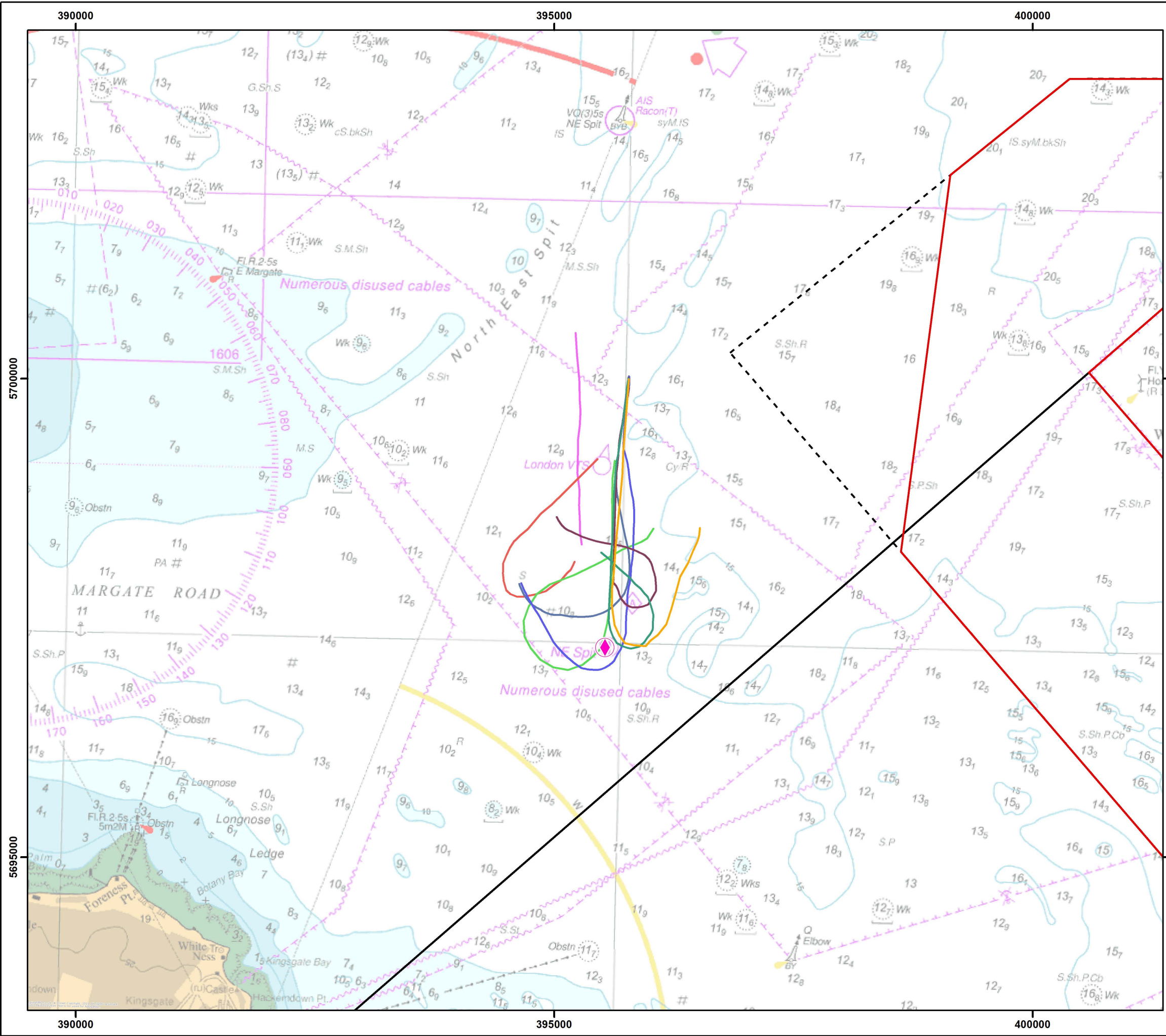
Pilot Simulations - Runs 1 to 8

Legend

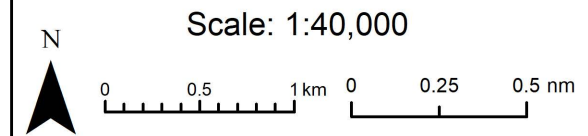
-  Pilot Station
-  Proposed RLB
-  Previous RLB
-  Sea Zone Boundary

Simulation Run ID

-  1
-  2
-  3
-  4
-  5
-  6
-  7
-  8



Layout: 61340-0AG-700-072-A_A3
 Projection: ETRS 1989 UTM Zone 31N
 Charts from MarineFIND. (c) Crown Copyright, 2019. All rights reserved.
 License No. EK001-FN1001-02494.
 Not to be used for Navigation.








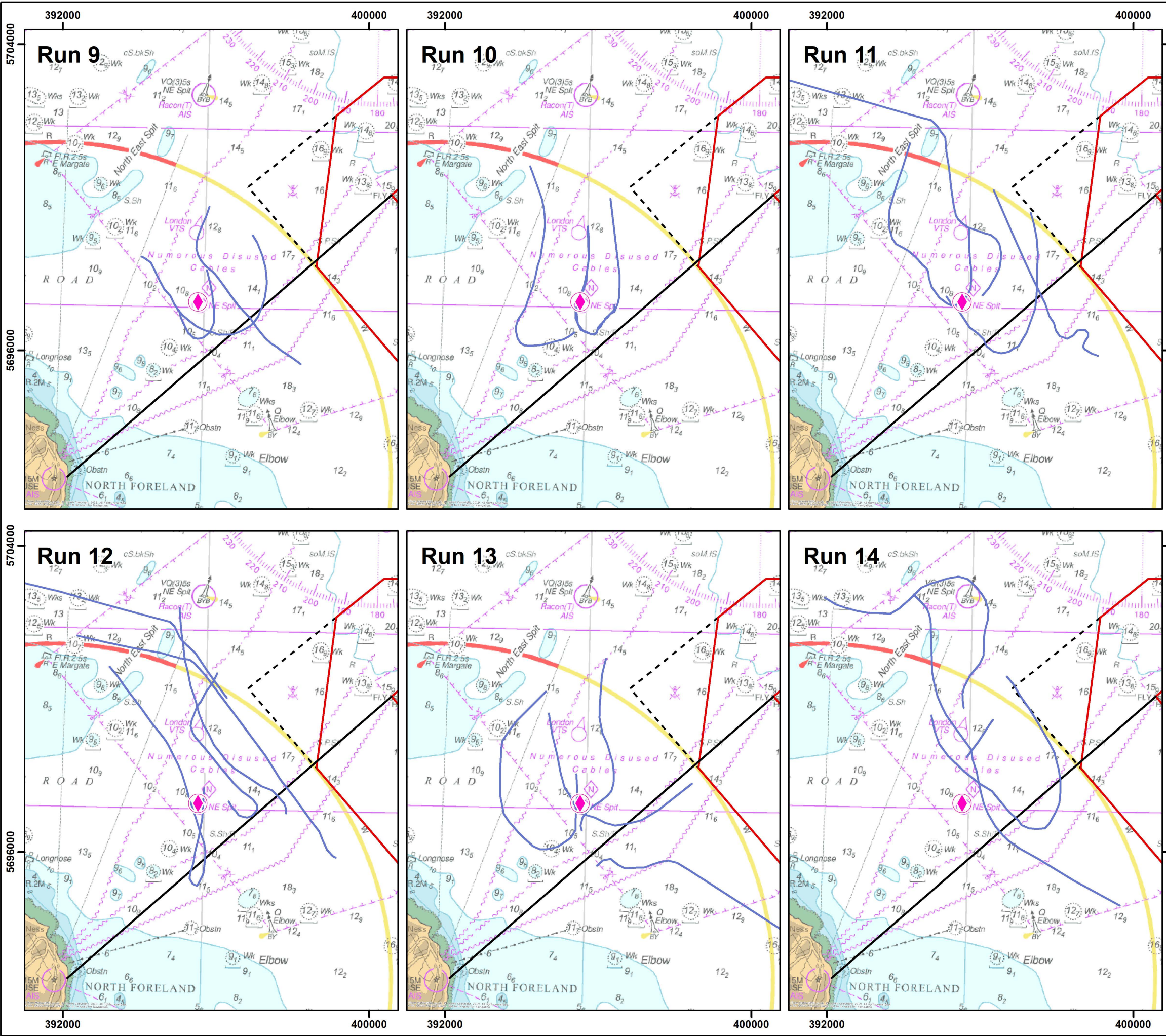
| | | | | | |
|--------|--|----|----|------|------------|
| Rev | B | By | RM | Date | 14/01/2019 |
| Drg No | 16UK1255_Pilot_Simulation_Runs_1to8_v2 | | | | |

**THANET EXTENSION
OFFSHORE WIND FARM**

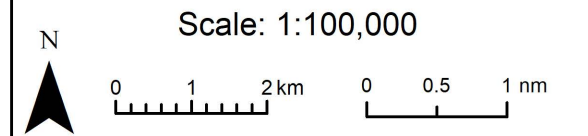
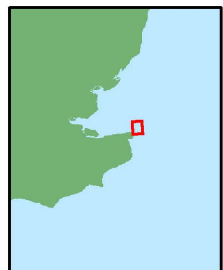
Pilot Simulations - Runs 9 to 14

Legend

-  Pilot Station
-  Proposed RLB
-  Previous RLB
-  Sea Zone Boundary
-  Simulation Run



Layout: 61340-0AG-700-072-A_A3
 Projection: ETRS 1989 UTM Zone 31N
 Charts from MarineFIND. (c) Crown Copyright, 2019. All rights reserved.
 License No. EK001-FN1001-02494.
 Not to be used for Navigation.



| | | | | | |
|--------|---|----|----|------|------------|
| Rev | B | By | RM | Date | 14/01/2019 |
| Drg No | 16UK1255_Pilot Simulation_Runs_9to14_v2 | | | | |